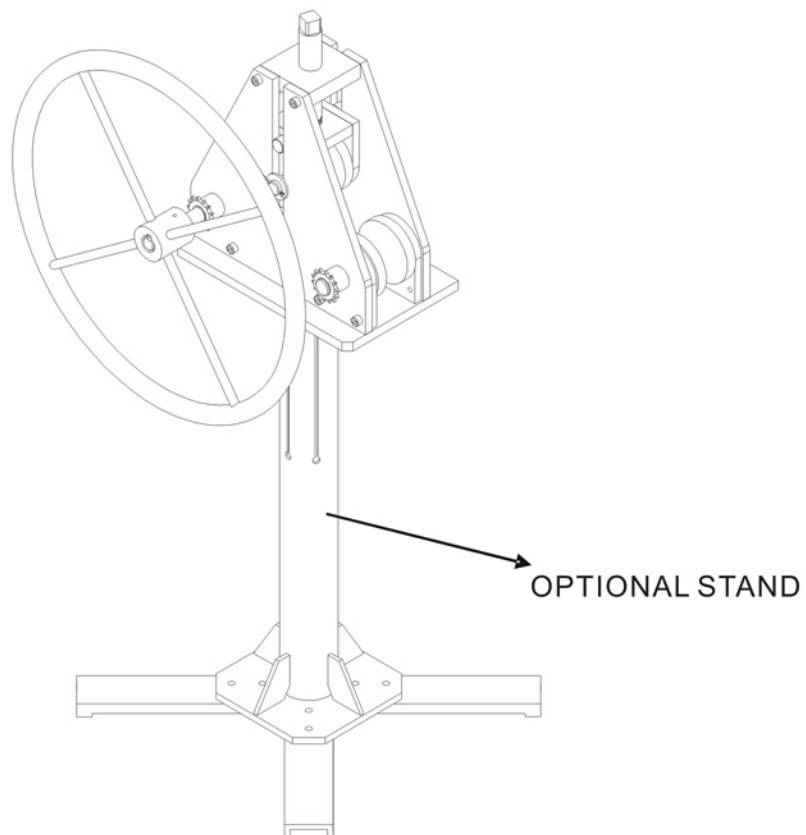


TTC

TUBING ROLLER



ITEM NO.61-251-075
MODEL NO. TR 50

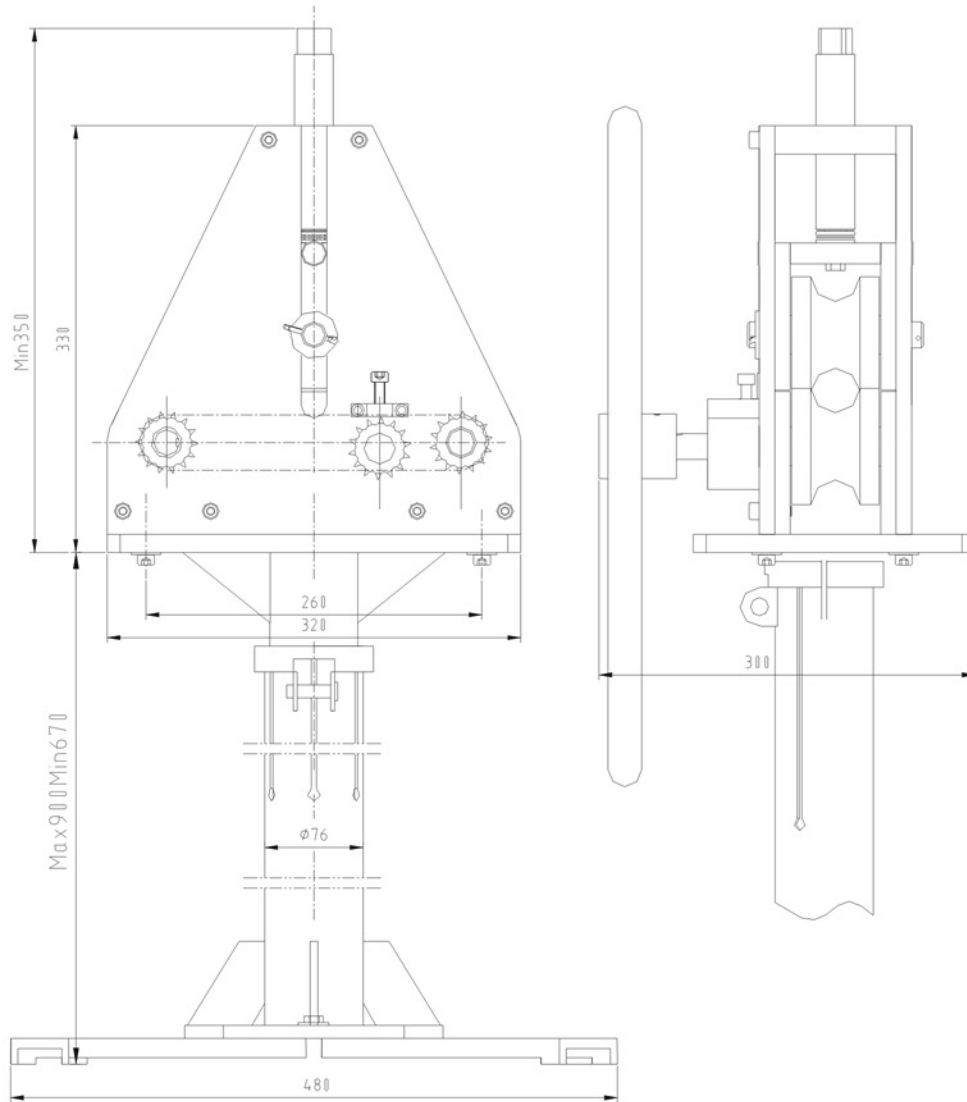
Version date: 05/30/2012

Please Read These Instructions Before Operating Your Machine
Contents subject to change without notice



CONTENTS

Outline Drawing	1
Capacity	1
Roller List	2
Operation Direction	2
Exploded Drawing	2
Parts List	3

OUTLINE DRAWING



CAPACITY

Size	Profile Type	Metric Size	Min Ø	Notes
1"		Ø 25.4mm	330mm	Wall thickness <2mm Less feeding amount to make sure the roundness of tube.
1½"		Ø 38.1mm	350mm	
1⅝"		Ø 41.28mm	360mm	
1¾"		Ø 44.5mm	360mm	
2"		Ø 50.8mm	370mm	
1/2"		12.7mm	340mm	
3/4"		19mm	340mm	
1"		25.4mm	350mm	

ROLLER LIST

1. STANDARD ROLLER

1-1/2" Round Tube Roller

2. OPTIONAL ROLLER

1" Round Tube Roller

1-5/8" Round Tube Roller

1/2" Square Tube Roller

1" Square Tube Roller

2" Round Tube Roller

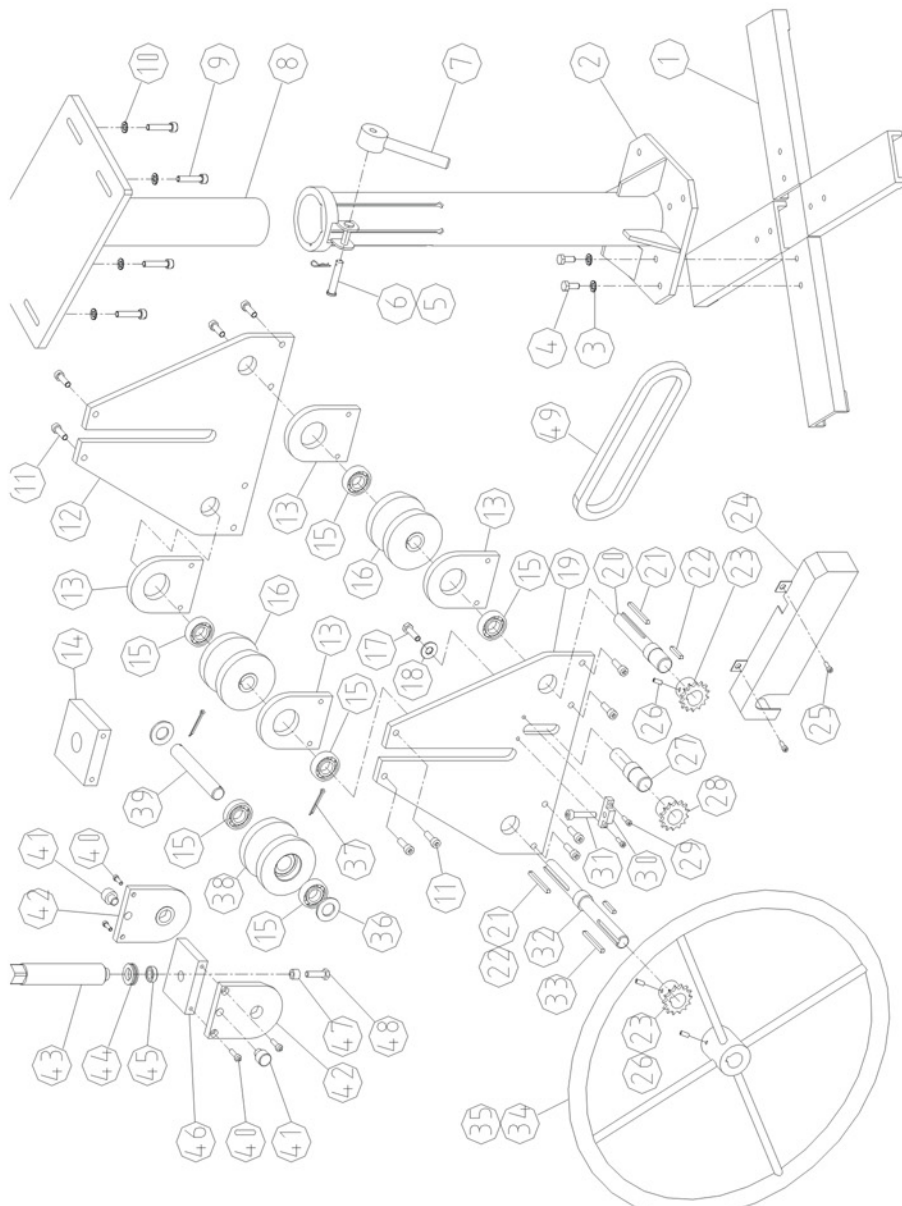
1-3/4" Round Tube Roller

3/4" Square Tube Roller

OPERATION DIRECTION

1. The chain can be tightened or loosened by adjusting the screw #31.
2. Loosening handle #7 to adjust the height of stand.
3. When the roller need to be changed, please screw off #11, #9, take off the cotter pin #37, and washer #36, and remove the back frame #12, then the lower roller #16 can be changed; the upper roller #38 can be changed by taking off pin #39.
4. Turning Screw Rod #43 to adjust feeding amount according to different wall thickness of tube. Thinner tube and less feeding amount, or else the tube section will be deformed.
5. The bearing should be lubricated frequently to increase its life length.

EXPLODED DRAWING

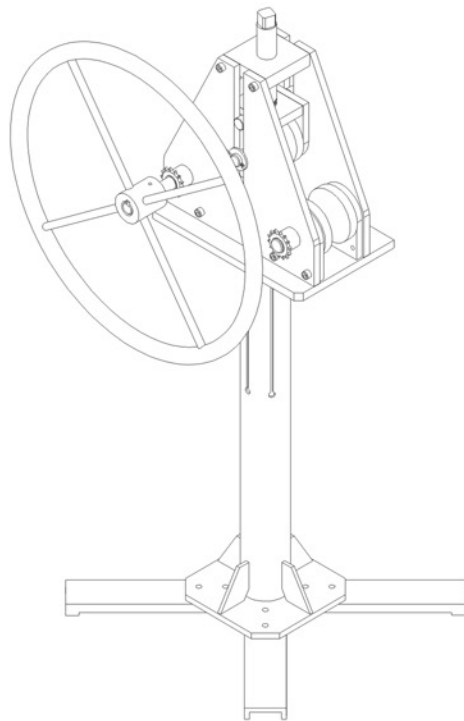


PARTS LIST

Ref. Nr.	Description	Qty	Ref. Nr.	Description	Qty
1	Stand Base	4	26	Screw M6x8	2
2	Lower Stand	1	27	Tension Shaft	1
3	Washer 8	8	28	Chain Wheel	1
4	Screw M8x30	8	29	Screw M6x20	2
5	Cotter Pin 3.2x20	1	30	Fixed Block	1
6	Pin	1	31	Screw M8x50	1
7	Handle	1	32	Long Axis for Lower Roller	1
8	Upper Stand	1	33	Flat Key 6x50	1
9	Screw M8x40	4	34	Turning Wheel	1
10	Washer 8	4	35	Screw M6x16	1
11	Screw M8x25	12	36	Washer 20	2
12	Back Frame	1	37	Cotter Pin 4x32	2
13	Lower Roller Wall	4	38	Upper Wheel	1
14	Upper Block	1	39	Axis for Upper Roller	1
15	Bearing 6004	6	40	Screw M6x16	4
16	Lower Roller	2	41	Pin	1
17	Screw M8X16	1	42	Vertical Plate	2
18	Washer	1	43	Screw Rod	1
19	Front Frame	1	44	Bearing 51103	1
20	Short Axis for Lower Roller	1	45	Lining	1
21	Flat Key 6x50	2	46	Horizontal Plate	1
22	Flat Key 6x30	2	47	Bearing 608	1
23	Chain Wheel	2	48	Screw M8x30	1
24	Safe Cover	1	49	Chain	1
25	Screw M8x12	2			

Note:

This manual is only for your reference. Owing to the continuous improvement of the machine, changes may be made at any time without obligation or notice.



TTC