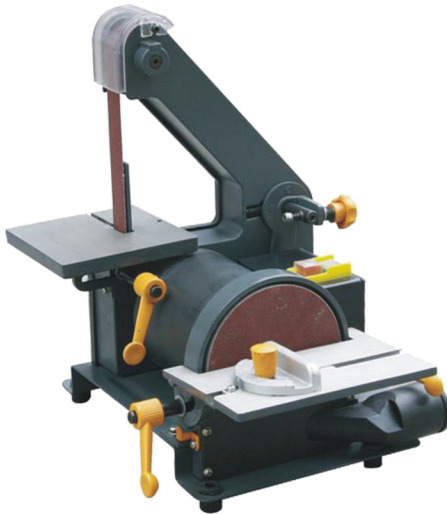




Belt & Disc Sander



ITEM NO. 87-115-643
MODEL NO. T3012

Version date: 01/18/2017

Please Read These Instructions Before Operating Your Machine
Contents Subject To Change Without Notice

CONTENTS

Safety Rules.....	1
Grounding Instructions.....	2
Assembly.....	3
Operating Instructions.....	4
Parts Drawing & List.....	5



SAFETY RULES

1. The combination of wood dust and metal filings can create a fire hazard. Before the machine is used for shaping metal products, ensure that there are no wood dust deposits inside the machine or in the dust collector.
2. Keep all guards in place and in working order.
3. Always wear safety glasses. Also, use a face or dust mask if your sanding operation is dusty. CAUTION: Certain materials produce dust that can be hazardous to your health. Always provide for proper ventilation or the use of a dust collection system.
4. Wear protective clothing. Do not wear loose clothing, gloves, ties, rings, bracelets, or other jewellery that could become caught in the moving parts of the sander. Wear a protective hair covering to contain long hair.
5. Check belt before operating the sander to make sure that the belt is not torn or loose. Also check that the belt is tracking correctly.
6. When using the disc, always sand on the side of the disc that is moving downwards. Using the other half will cause the work piece to fly up, and is potentially very dangerous.
7. When sanding long or heavy materials that could cause the machine to tip, secure the machine to a bench or other supporting surface. Also, provide additional support for the work table if it is required.
8. Do not sand pieces that are too small to be held onto securely. Always hold the work firmly when sanding, and do not attempt any freehand operations. The work piece should be held firmly to the table.
9. Use this machine for what it was designed for. Do not try to perform operations that are beyond its capabilities.
10. Do not force the machine. Feed materials into it at a rate that does not slow or stall the motor.
11. If you are sanding metal, do not let it get overly hot. Dip it in water to cool it. A steady stream of water should never be used on the work piece while it is on the machine.
12. Keep your work area clean and uncluttered. A cluttered workspace invites accidents.
13. Do not use the sander in potentially dangerous locations, such as in damp or wet locations, or in the rain. As well, keep your work area well lighted.
14. Keep all visitors and onlookers at a safe distance while you are operating this machine. Children require extra caution.
15. Never leave the tool unattended while it is running. Turn the switch "off", and wait until the machine has come to a complete stop before leaving the work area.
16. Always remove adjusting keys and wrenches before turning the machine "on".
17. Removes scraps and other materials from the tables before the sander is turned on.
18. Avoid accidental starts. Make sure the switch is in the "off" position before plugging it in.
19. Always turn the machine off and unplug it before changing the belt or disc.
20. If any guard or other part of the machine becomes damaged, ensure that it will still perform its intended function before operating the sander.

GROUNDING INSTRUCTIONS

In the event of a malfunction or breakdown, grounding provides a path of least resistance for electrical current. This reduces the risk of electrical shock. This tool is equipped with an electrical cord having a three pronged electrical plug. The plug must be used in a matching outlet that is properly installed and grounded in accordance with all local codes.

Do not modify the plug provided. If it will not fit the outlet, have the proper outlet installed by a qualified electrician, ensuring that it is grounded correctly. Use only 3 wire extension cords with 3 pronged plugs.

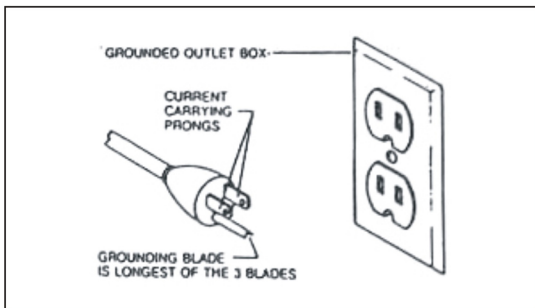


Figure 1

Improper connection of the ground wire can result in the risk of electrical shock. The green wire is the ground wire. If the cord is damaged or worn, repair or replace it before the machine is operated. If repair or replacement of the cord is necessary, ensure that the ground wire is never connected to a live terminal.

Check with a qualified electrician or service personnel if the grounding instructions are not completely understood, or if there is any doubt as to whether or not the tool is grounded properly.

ASSEMBLY

Warning:

Do not plug this machine into wall outlet or attempt to operate it until it is completely assembled.

Belt Table Assembly

1. Slide the belt and platen through the table.
2. Insert the hex head bolt (A) through the hole in the sander and the slot in the underside of the table, as shown in **Figure 2**.
3. Fasten the flat washer and table locking assembly (B) onto the bolt. The table locking handle is spring loaded. By pulling the handle away from the head of the bolt, the handle can be rotated without loosening or tightening the locking assembly.
4. A positive stop to set the table at 90 degrees to the belt, is located at the middle of the back of the table. The set screw is adjusted with a hex head allen-key.

NOTE: When tilting the table, it should be adjusted so that the gap between the belt and the table is no larger than 1/16". A gap larger than this could cause the work piece to slip down between the belt and the table.



Figure 2

Disc Table and Guard

Position the sanding disc guard over the disc as shown in **Figure 3**. Fasten the guard down using the allen head screws provided.

Platen

The platen can be adjusted by loosening the two screws that fasten it to the frame (B), as shown in **Figure 3**. The platen should be adjusted so that it almost touches the back of the abrasive belt.

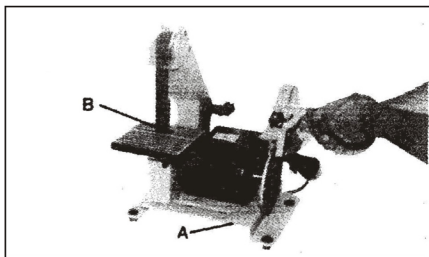


Figure 3

OPERATING INSTRUCTIONS

Removing/Installing Abrasive Belts

1. Remove the lock knob from the top of the side cover, and remove the entire cover.
2. Pull the tracking knob (A) towards the front of the unit to release the belt tension. (As shown in **Figure 4**). While holding the tension knob, remove the belt from the three wheels.
3. Reinstall the new belt and replace the cover.

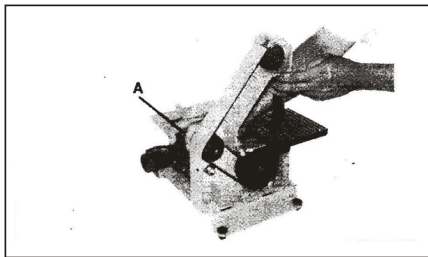


Figure 4

Belt Tracking

To track the belt, turn the tracking knob (A). Turning the knob clockwise will move the belt right, and vice-versa. This adjustment is usually very slight.

Removing/Installing Abrasive Discs

1. Remove the two allen head screws that hold the disc guard and table assembly down, and remove the assembly.
2. Remove the sanding disc by peeling it off the disc plate. Clean any adhesive residue off the disc plate.
3. Press the new adhesive sanding disc onto the disc plate.
4. Replace the guard and table assembly.

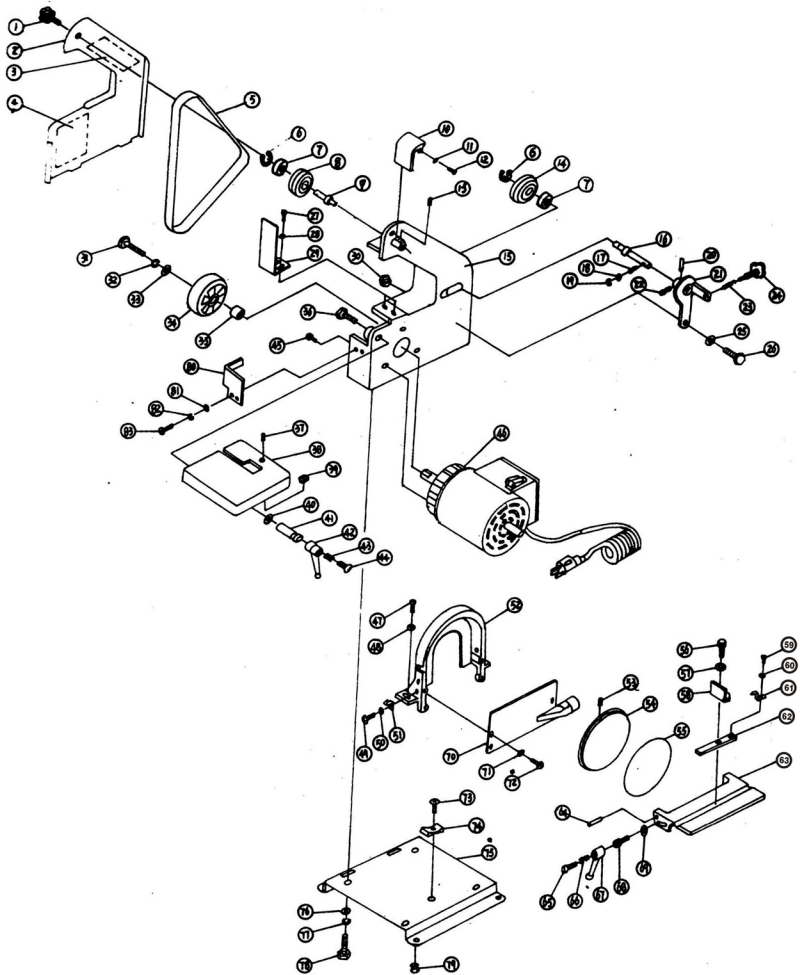
Dust Chute

A dust chute for the belt is located on the side cover of the unit. It is a 1-1/2" I.D. opening.

Table Adjustments

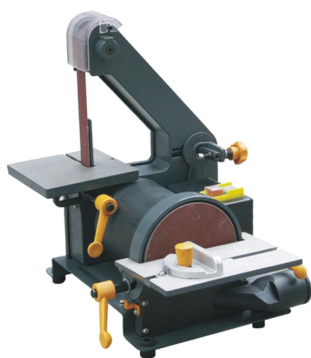
Both the disc and belt tables are adjustable from 90 degrees to 45 degrees. To adjust the belt table, loosen the table locking handle on the right hand side of the table, adjust the table to the desired angle, and retighten. To adjust the disc table, loosen the two locking knobs on either side of the table, adjust the table to the desired angle, and retighten.

PARTS DRAWING & LIST



PARTS DRAWING & LIST

Part No.	Description	Qty.	Part No.	Description	Qty.
1	Knob	1	43	Spring	1
2	Cover	1	44	Screw	1
3	Label	1	45	Screw	3
4	Warning	1	46	Motor	1
5	Belt	1	47	Screw	2
6	Retaining Ring	2	48	Washer	2
7	Bearing	2	49	Screw	1
8	Driven Wheel	1	50	Washer	1
9	Shaft	1	51	Pointer	1
10	Belt Guard	1	52	Cover	1
11	Washer	1	53	Screw	1
12	Screw	1	54	Disc	1
13	Screw	1	55	Sander	1
14	Pulley	1	56	Knob	1
15	Machine Body	1	57	Washer	1
16	Adjustable Shaft	1	58	Miter Gauge	1
17	Spring	1	59	Screw	1
18	Washer	1	60	Washer	1
19	Retaining Ring	1	61	Pointer	1
20	Elastic Pin	1	62	Sliding Bar	1
21	Adjustable Plate	1	63	Table	1
22	Spring	1	64	Pin	2
23	Spring	1	65	Screw	2
24	Knob	1	66	Spring	2
25	Washer	1	67	Handle	2
26	Bolt	1	68	Bolt	2
27	Screw	2	69	Washer	2
28	Washer	2	70	Cover for Dust	1
29	Support Bracket	1	71	Washer	4
30	Nut	1	72	Screw	4
31	Screw	1	73	Screw	1
32	Elastic Washer	1	74	Rubber Pad	1
33	Washer	1	75	Base	1
34	Belt Wheel	1	76	Washer	2
35	Insert	1	77	Elastic Washer	2
36	Bolt	1	78	Bolt	2
37	Screw	1	79	Rubber Pad	4
38	Table	1	80	Cover for Belt	1
39	Nut	1	81	Washer	2
40	Washer	1	82	Elastic Washer	2
41	Bolt	1	83	Screw	2
42	Handle	1	84		



TTC