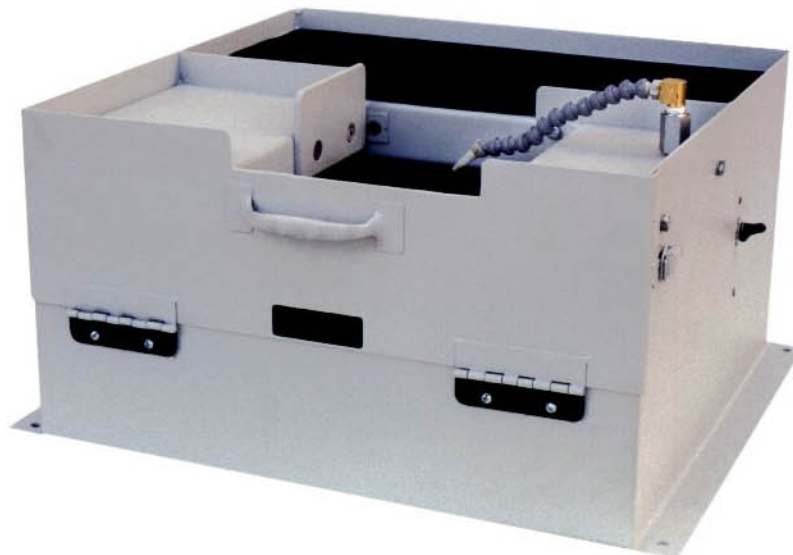


INSTRUCTION MANUAL

MODEL NO. S4SWB
SANDER



**KALAMAZOO
INDUSTRIES, INC.**

6856 East K Avenue

Kalamazoo, MI 49048

269-382-2050 PH

269-382-0790 FAX

www.kalamazooindustries.com

WARRANTY

All products are guaranteed for a period of one year to the original purchaser, against defects in material workmanship under normal use. Electric motors are warranted by the motor manufacturer and will be repaired by the nearest motor repair station. If non-repairable, they will be replaced by Kalamazoo Industries. Please call for instructions 269-382-2050.

RETURN POLICY

Authorization must be obtained before returning merchandise. Please call our customer service department for a return authorization number at 269-382-2050. Please include with your return a copy of your invoice or packing slip. Materials must be sent back prepaid. (Unless otherwise indicated). All returns will be subject to a 10% restocking charge. No returns will be accepted after one year of invoice date.

BELT SANDER SAFETY

- READ THE OPERATING INSTRUCTIONS BEFORE RUNNING MACHINE.
- ALWAYS WEAR SAFETY GLASSES OR A FULL FACE SHIELD FOR PROTECTION.
- KEEPS HANDS CLEAR OF THE SANDING AREA.
- NEVER WEAR GLOVES OR LOOSE FITTING CLOTHES WHEN OPERATING THIS MACHINE.
- ALWAYS KEEP HAIR TIED BACK OR COVERED.
- LET MACHINE ROTATION COME TO A FULL STOP BEFORE CHANGING BELT.
- KEEP SAFETY GUARDS IN PLACE. DO NOT ALTER GUARDS OR MACHINE IN ANY WAY. ANY ALTERATIONS TO GUARDS OR MACHINE COULD CAUSE SERIOUS INJURY.
- ALL BELT SANDERS SHOULD BE OPERATED IN A WELL-VENTILATED AREA. THE DUST CREATED WHEN SOME MATERIALS ARE SANDED CAN BE HARMFUL. DUST MASKS ARE RECOMMENDED AS A PRACTICAL MEANS OF MINIMIZING DUST INHALATION. FUMES FROM OTHER SOURCES CAN ALSO CAUSE FIRES WHEN IN CONTACT WITH SANDING SPARKS.
- SPARKS CREATED BY SANDING SHOULD BE DIRECTED DOWNWARD AND AWAY FROM THE FACE AND BODY. DO NOT GRIND NEAR FLAMMABLE MATERIAL.

KALAMAZOO INDUSTRIES, INC.
6856 East K Avenue
Kalamazoo, MI 49048
269-382-2050 PH
269-382-0790 FAX
www.kalamazooindustries.com



Made in USA



6856 East K Avenue - Kalamazoo, MI 49048-6042
Phone 269-382-2050 Fax 269-382-0790
www.kalamazooindustries.com

S4SWB

4" x 36" belt, ½ hp, wet bench top belt sander.

Basic Operation:

Model S4SWB is a wet bench top belt sander , 4" x 36" belt, 3600 SFPM, integral cabinet and water tank, submersible pump. ½ hp, 1 phase, 110 volt.

Coolant- Use a rust inhibiting coolant. Consult your dealer for coolant specifications.

Work area: The useable belt work area is 4" wide x 6" long. Sanding belt grits vary from course to very fine. The higher the grit number the finer the sand paper. Consult your dealer for abrasive sanding belts. Belt size: 4"x 36", wet belt.

Belt tracking- See tracking pictures. Use tracking screw (B , #11 on parts sheet) to twist upper yoke (#8) to track sanding belt left or right. The upper idler pulley is crowned along with the bottom drive pulley. This keeps the belt centered or "tracked". The opposing spring and bolt on the opposite side of the yoke (8) keeps the yoke position.

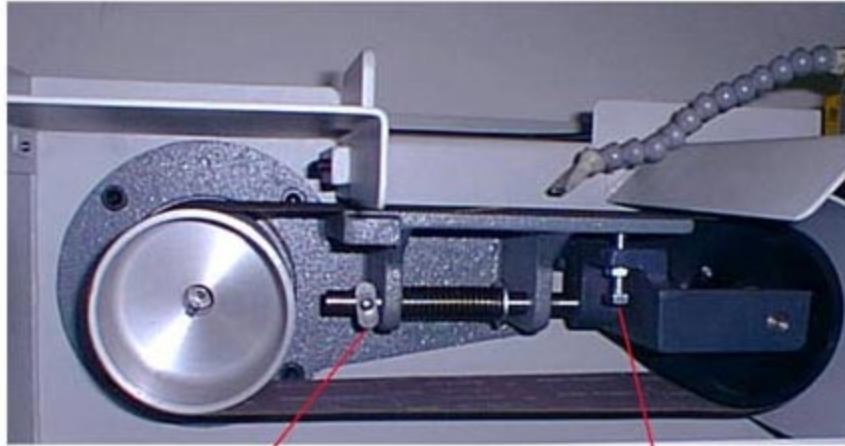
Belt Changing- See tracking sheet pictures. With power OFF, squeeze the sanding belt with your hand to compress the belt tension spring. With the other hand line up the cam on the tension shaft to maintain compression of the spring. Remove the sanding belt and replace with a new belt. Repeat the squeezing of the belt and reposition the cam 90 deg. to the tension shaft to allow re-tensioning of the belt. Jog the on/off switch to see that the belt is tracking (centered on the pulleys). You are now ready to run.

Maintenance- Keep the units integral coolant tank cleaned out. To clean out the tank, direct the coolant line away from the machine into a bucket/bowl, etc.. Wipe out the swarf in the bottom of the tank. Vary your sanding area on the sanding frame to spread out the "wear" on the sanding frame. Dishing of the cast frame from wear will cause belt breakage.

Tracking problems- If the sanding belt is not tracking or "centered" more than likely the "crown" on the drive pulley is worn down flat and the belt cannot seek the "high" spot. Replace the drive pulley. The only bearings that may fail over time would be the idler pulley bearings on the idler pulley. Replace the idler pulley.

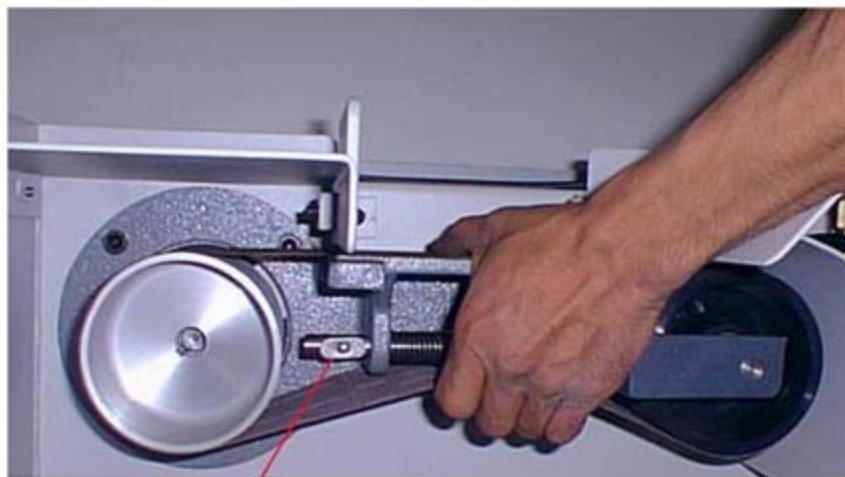
Safety- See safety sheet.

**Specs: 4" x 36" belt, 1/2 HP , 110 volt, 1 phase
Internal tank, submersible pump.
Belt changing on # S4SWB**



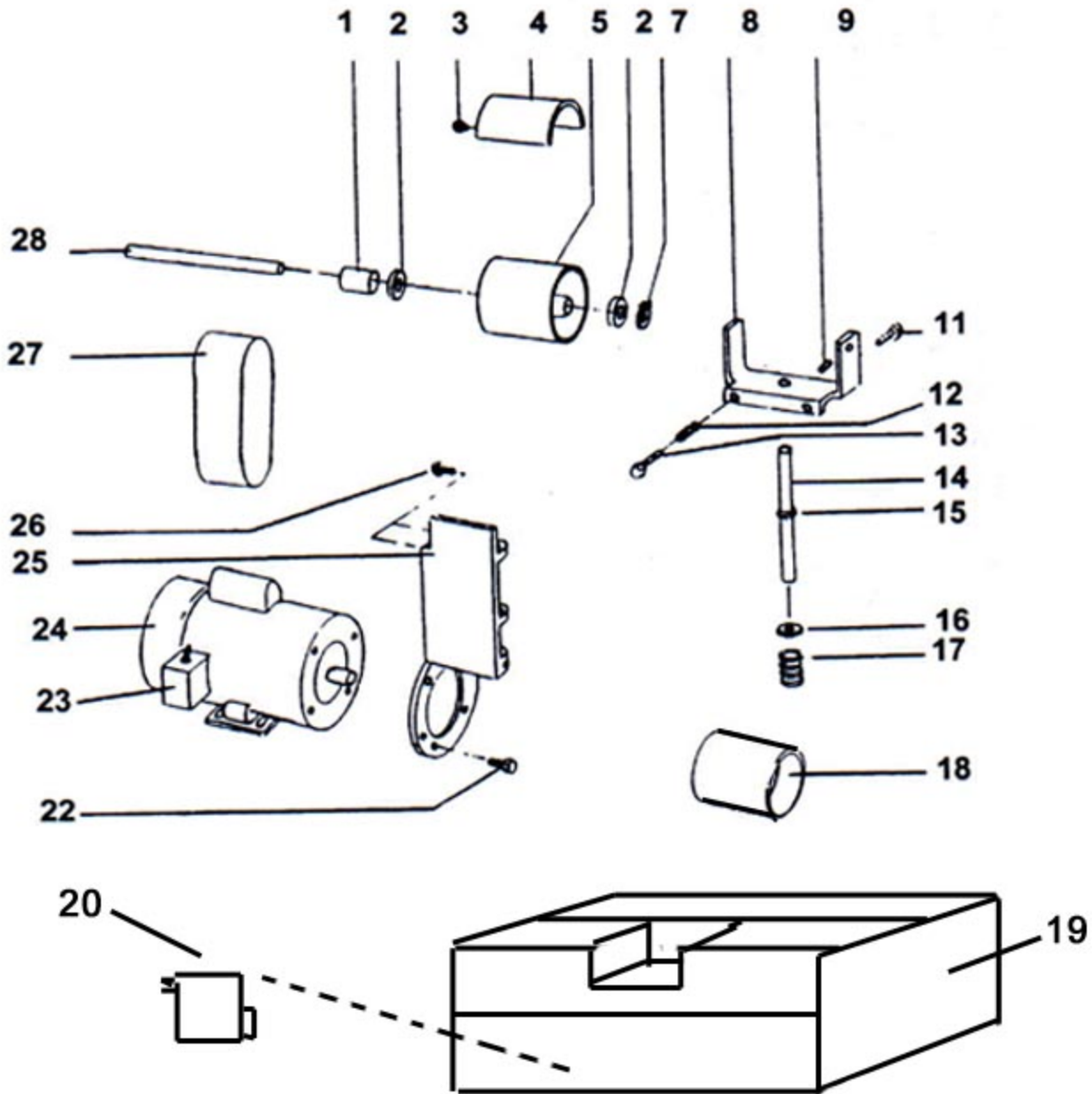
A
Squeeze belt manually,
move cam to Position C.

B
Tracking



C
Squeeze belt, Position cam as
shown. Change belt, release
cam manually to position A.

**Use rust inhibiting coolant! Keep coolant tank clean.
To clean out coolant, direct coolant line into a
bucket, pump out tank. Dispose of properly.**



ITEM# PART NO DESCRIPTION QTY

1	123-003	COLLAR	1
2	044-002	BEARINGS (IN IDLER PULLEY)	2
3		1/2-20x1/2 R.H.M.S.	2
4	342-005	UMBRELLA GUARD	1
5	560-006	IDLER PULLEY W/BEARINGS	1
7	5100-50	RETAINING RING	1
8	960-002	YOKE	1
9		10-24x3/8 S.S.C.	1
10	342-022	OSHA GUARD	1
11		TRACKING SCREW	1
12	697-011	SPRING	1
13		10-24x1-1/2 F.H.	1
14	700-001	SHAFT	1
15		1/2" SNAP RING	1

16		1/2" WASHER	1
17	697-010	TENSION SPRING	1
18	560-005	DRIVE WHEEL	1
19		Cabinet	1
20		Pump	1
			1
22		3/8-16x3/4 H.H.C.S.	4
23	710-003	TOGGLE SWITCH	1
24	486-022	CL3503 1/2HP, 1PH	1
	486-002	CL3509 1HP, 1PH	
25	291-002	FRAME	1
26		1/2-20x1/2 H.H.C.S.	2
27		4x36" SANDING BELT	1
28	701-008	IDLER SPINDLE	1

KALAMAZOO INDUSTRIES, INC. 6856 East K Ave. Kalamazoo, MI 49048
 269-382-2050 PH 269-382-0790 FAX
www.kalamazooindustries.com