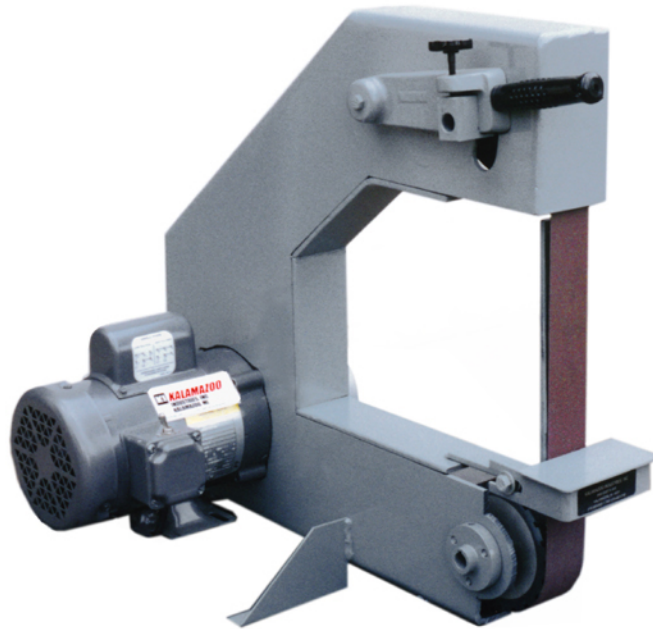


INSTRUCTION MANUAL BG272



**KALAMAZOO
INDUSTRIES, INC.**

6856 East K Avenue

Kalamazoo, MI 49048

269-382-2050 PH

269-382-0790 FAX

www.kalamazooindustries.com



6856 East K Avenue - Kalamazoo, MI 49048-6042
Phone 269-382-2050 Fax 269-382-0790
www.kalamazooindustries.com

Model: BG272
Basic Operation

1. Remove from shipping box, check to be sure that incoming voltage matches the unit.
2. Belt changing/Tensioning: Turn off machine power, open the side door of the machine to expose the sanding belt. Pull up on lever #9 (see parts sheet) from rack (#13) . This releases belt tension. Remove sanding belt and replace with a new belt. Re-tension the sanding belt by pulling up on lever #9 and locking it into the rack (#13). Tighten tension handle up into the rack (#13)
3. Belt tracking- Track or “center on the pulleys” the sanding belt with knob (#11). This moves the sanding belt left or right. The belt should stay centered or “tracked”.
4. Work table- When using the work table keep the table within 1/8” of the sanding belt to prevent “pinching” the workpiece between the belt and the table.
5. Belt guard- Keep the flip down belt guard (#15) in position.
6. Safety- Always follow correct safety procedures. SEE SAFETY SHEET.

WARRANTY

All products are guaranteed for a period of one year to the original purchaser, against defects in material workmanship under normal use. Electric motors are warranted by the motor manufacturer and will be repaired by the nearest motor repair station. If non-repairable, they will be replaced by Kalamazoo Industries. Please call for instructions 269-382-2050.

RETURN POLICY

Authorization must be obtained before returning merchandise. Please call our customer service department for a return authorization number at 269-382-2050. Please include with your return a copy of your invoice or packing slip. Materials must be sent back prepaid. (Unless otherwise indicated). All returns will be subject to a 10% restocking charge. No returns will be accepted after one year of invoice date.

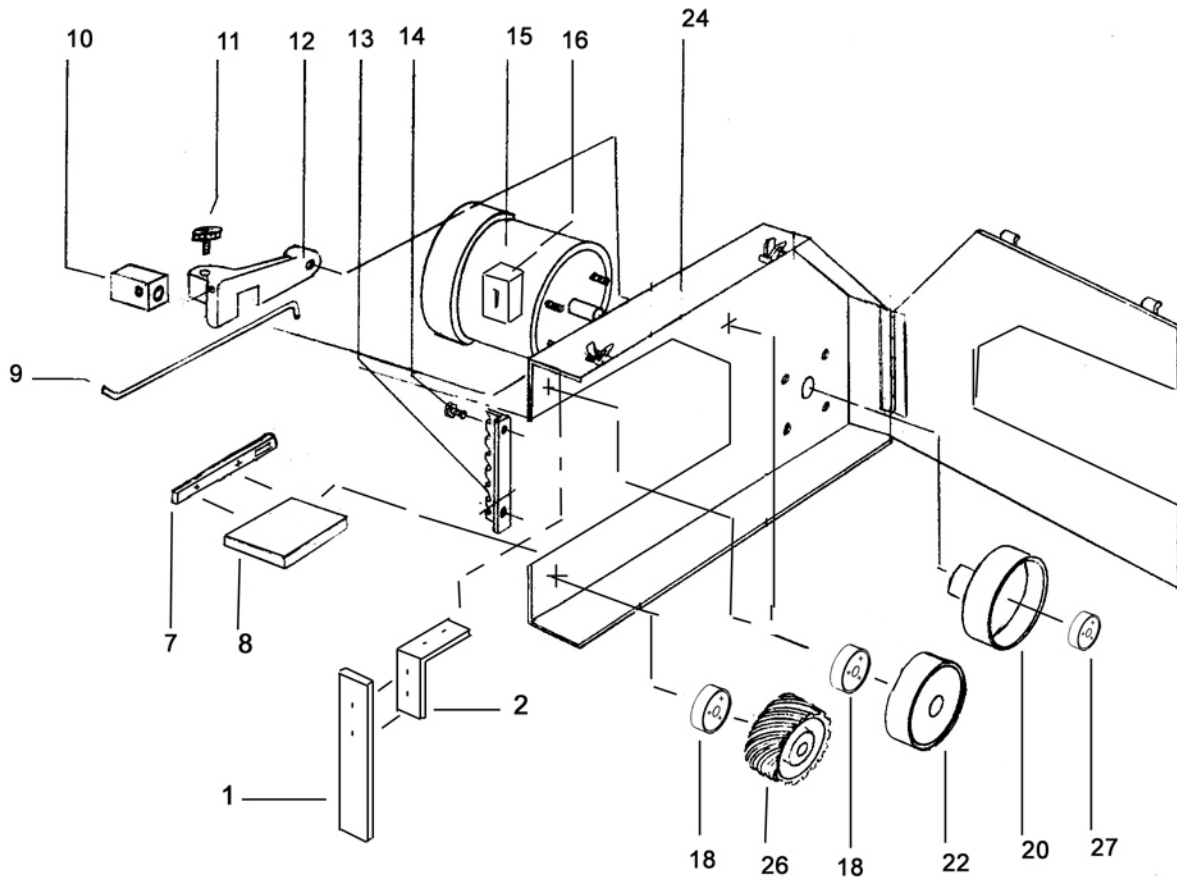
BELT SANDER SAFETY

- READ THE OPERATING INSTRUCTIONS BEFORE RUNNING MACHINE.
- ALWAYS WEAR SAFETY GLASSES OR A FULL FACE SHIELD FOR PROTECTION.
- KEEPS HANDS CLEAR OF THE SANDING AREA.
- NEVER WEAR GLOVES OR LOOSE FITTING CLOTHES WHEN OPERATING THIS MACHINE.
- ALWAYS KEEP HAIR TIED BACK OR COVERED.
- LET MACHINE ROTATION COME TO A FULL STOP BEFORE CHANGING BELT.
- KEEP SAFETY GUARDS IN PLACE. DO NOT ALTER GUARDS OR MACHINE IN ANY WAY. ANY ALTERATIONS TO GUARDS OR MACHINE COULD CAUSE SERIOUS INJURY.
- ALL BELT SANDERS SHOULD BE OPERATED IN A WELL-VENTILATED AREA. THE DUST CREATED WHEN SOME MATERIALS ARE SANDED CAN BE HARMFUL. DUST MASKS ARE RECOMMENDED AS A PRACTICAL MEANS OF MINIMIZING DUST INHALATION. FUMES FROM OTHER SOURCES CAN ALSO CAUSE FIRES WHEN IN CONTACT WITH SANDING SPARKS.
- SPARKS CREATED BY SANDING SHOULD BE DIRECTED DOWNWARD AND AWAY FROM THE FACE AND BODY. DO NOT GRIND NEAR FLAMMABLE MATERIAL.
- ELECTRIC SANDING MACHINES ARE NOT INTENDED FOR USE IN OR NEAR WATER. THIS INCLUDES AN OPERATOR STANDING ON A WET FLOOR OR WORKING AROUND CONTAINERS OF WATER OR OTHER CONDUCTIVE LIQUIDS.

KALAMAZOO INDUSTRIES, INC.
6856 East K Avenue
Kalamazoo, MI 49048
269-382-2050 PH
269-382-0790 FAX
www.kalamazooindustries.com



Made in USA



Model: BG272 2" x 72" belt

ITEM	PART NO.	DESCRIPTION
1.	563-001	Platen
2.	041-070	Bracket
7.	455-014	Lever
8.	829-047	Work Table
9.	455-001	Tension Handle
10.	053-004	Tracking Block
11.	1/4-20"	Tracking Knob
12.	002-009	Tracking Arm
13.	041-014	Tension Bracket
14.		bolt
15.	486-002	1HP TEFC motor
16.	710-009	Switch 1 phase
17.		
18.	004-010	Adaptor
20.	560-061	8" Drive Wheel
22.	936-003	Idler Wheel (2)
24.	291-047	Frame
26.	CW5 5" dia.	Contact Wheel
27.	049-019	bushing

INSTRUCTIONS FOR MODEL BG272

- BELT TRACKING** - Turning tracking knob #11 causes belt to move right or left.
- BELT TENSION** - To obtain the correct tension. Lift tension handle #9 and engage in proper notch on tension bracket #13. Only moderate pressure is required.
- Always wear safety glasses when operating this machine.
- When using the work table #8, always keep it adjusted to within 1/8" or less from the belt.

KI KALAMAZOO INDUSTRIES, INC.

6856 East K Avenue
 Kalamazoo, MI 49048
 269-382-2050 PH
 269-382-0790 FAX
www.kalamazooindustries.com