

INSTRUCTION MANUAL

K10B



**KALAMAZOO
INDUSTRIES, INC.**

6856 East K Avenue

Kalamazoo, MI 49048

269-382-2050 PH

269-382-0790 FAX

www.kalamazooindustries.com

WARNING!

READ AND UNDERSTAND ALL SAFETY PRECAUTIONS AND OPERATING INSTRUCTIONS BEFORE OPERATING UNIT

OPERATING INSTRUCTIONS

INSPECT YOUR NEW UNIT CAREFULLY FOR SIGNS OF SHIPPING DAMAGE. IF DAMAGED, PLEASE CONTACT CARRIER AND SUBMIT A CONCEALED DAMAGED REPORT. DO NOT RETURN GOODS TO US WITHOUT OUR RGA NUMBER AND SHIPPING INSTRUCTIONS. SEE BACK PAGE FOR RETURN POLICY AND WARRANTY.

BEFORE STARTING OR CONNECTING ELECTRICALS VERIFY THE PHASE AND VOLTAGE OF THE UNIT.

BE SURE MACHINE IS BALANCED CORRECTLY SO IT WILL NOT TIP OVER.

TO GUARD AGAINST CONCEALED DAMAGE, STAND CLEAR AND OBSERVE UNIT FOR THE FIRST FEW MINUTES OF OPERATION. GUARDS MUST NEVER BE REMOVED.

SAW SAFETY

NEVER REMOVE SAFETY GUARDS FROM MACHINE. DISCONNECT POWER SOURCE BEFORE MAKING ANY MACHINE ADJUSTMENTS

ELECTRIC MACHINES ARE NOT INTENDED FOR USE IN OR NEAR WATER. THIS INCLUDES AN OPERATOR STANDING ON A WET FLOOR.

DO NOT USE AROUND FLAMMABLE MATERIALS OR LIQUIDS.

MACHINES SHOULD BE OPERATED IN VENTILATED AREAS.

ALWAYS WEAR SAFETY GLASSES OR A FULL FACE SHIELD FOR PROTECTION.

KEEP HANDS CLEAR OF THE CUTTING AREA.

DO NOT WEAR GLOVES OR LOOSE FITTING CLOTHES WHEN OPERATING THIS MACHINE.

ALWAYS KEEP HAIR TIED BACK OR COVERED.

ALWAYS KEEP FLANGES CLEAN AND TIGHT AGAINST CUTTING WHEEL.

KEEP STEEL BLADES FULLY RETRACTED INTO WHEEL GUARD WHEN DONE CUTTING.

ALWAYS KEEP WHEEL GUARD IN DOWN POSITION.

BE SURE WORK PIECE IS CLAMPED SECURELY IN VISE BEFORE CUTTING.

WARNING!!!

IMPROPER USE MAY CAUSE BREAKAGE AND SERIOUS INJURY.

DO

1. DO always handle and store wheels in a careful manner.
2. DO visually inspect all wheels before mounting for possible damage.
3. DO check machine speed against the established maximum safe operating speed marked on the wheel.
4. DO check mounting flanges for equal and correct diameter.
5. DO use mounting blotters when supplied with wheels.
6. DO always use a safety guard covering at least one-half of the abrasive wheel.
7. DO allow newly mounted wheels to run at operating speed, with guard in place, for at least one minute before cutting.
8. DO always wear safety glasses or some type of eye protection when cutting.

DON'T

1. DON'T use a cracked wheel or one that has been dropped or has become damaged.
2. DON'T force a wheel onto the machine or alter the size of the mounting hole-if wheel won't fit the machine, get one that will.
3. DON'T ever exceed maximum operating speed established for the wheel.
4. DON'T use mounting flanges on which the bearing surfaces are not clean, flat and free of burrs.
5. DON'T tighten the mounting nut excessively.
6. DON'T start the machine until the wheel guard is in place.
7. DON'T jam work into wheel.
8. DON'T force cutting so that motor slows noticeably or work gets hot.
9. DON'T wear gloves when operating machine.



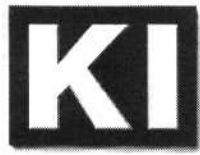
KALAMAZOO INDUSTRIES, INC.

Basic Operation

K10 abrasive saw
3 hp, 5/8" spdl. RH thd.

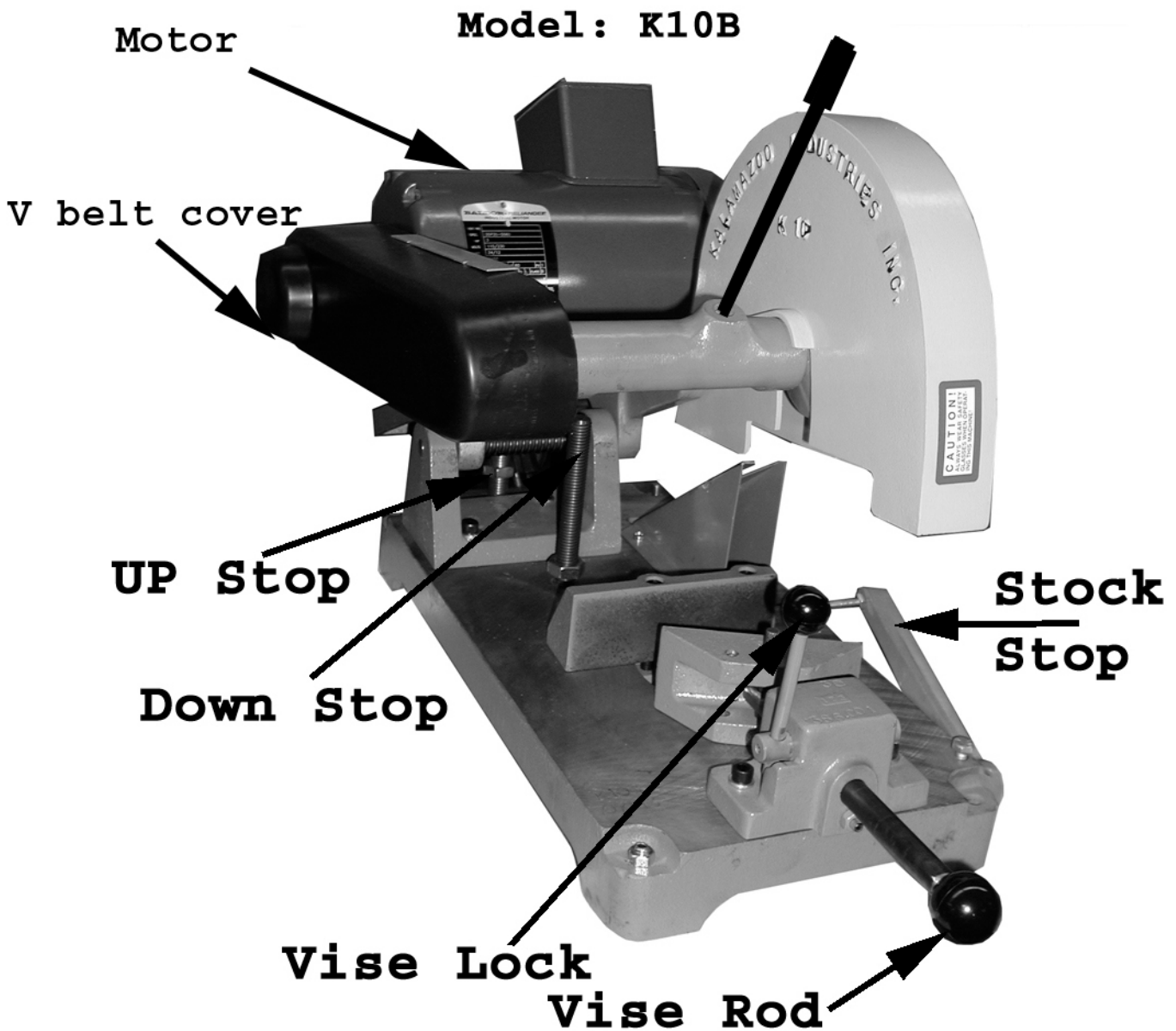
SAFETY! SAFETY! SAFETY! ALWAYS WEAR SAFETY GLASSES, NO GLOVES OR LOOSE HAIR, CLOTHING AND NO STEEL BLADES. ABRASIVE BLADES ONLY. SEE ABRASIVE SAFETY SHEET.

1. Be sure incoming AC voltage matches saw voltage/phase. IF NOT FAMILIAR WITH ELECTRICS CONSULT AN ELECTRICIAN. ELECTRICAL FAILURES DUE TO INCORRECT WIRING ARE NOT WARRANTED.
2. Use correct abrasive blade for the material. Any 5/8" arbor blade can be fitted but be sure it's the correct grade for the material. Good cuts are bright and not burned. Consult your dealer for abrasive blades. Many grades of blades may need to be sampled before selecting the one that performs the best.
3. Adjust UP stop and Down stop so abrasive blade does not cut into the saw table. Adjust Down stop as the blade wears down to allow blade to cut thru material.
3. Clamp material securely. Slide vise rod tightly against material , use the vise Lock handle to clamp the work piece tight. **DO NOT ALLOW WORK PIECE TO MOVE DURING CUTTING OR THE BLADE WILL BREAK!**
4. Adjust the stock stop for cutting lengths.
5. Keep V belts tensioned. 1/2" of squeeze is tight enough. If V belt "squeals" then they are loose. **DO NOT OVER TIGHTEN!** See instruction sheet.
6. Cut material by pulling down on the manual handle. Use a smooth steady cutting force to allow the abrasive blade to "break down" and expose a new cutting edge. If the blade does not cut a bright non-burned cut then the abrasive blade grade is incorrect. Consult your dealer or the factory for blade specifications.
7. Maintenance- Keep V belts tensioned, Up and Down stops adjusted, keep machine clean. No grease is required.

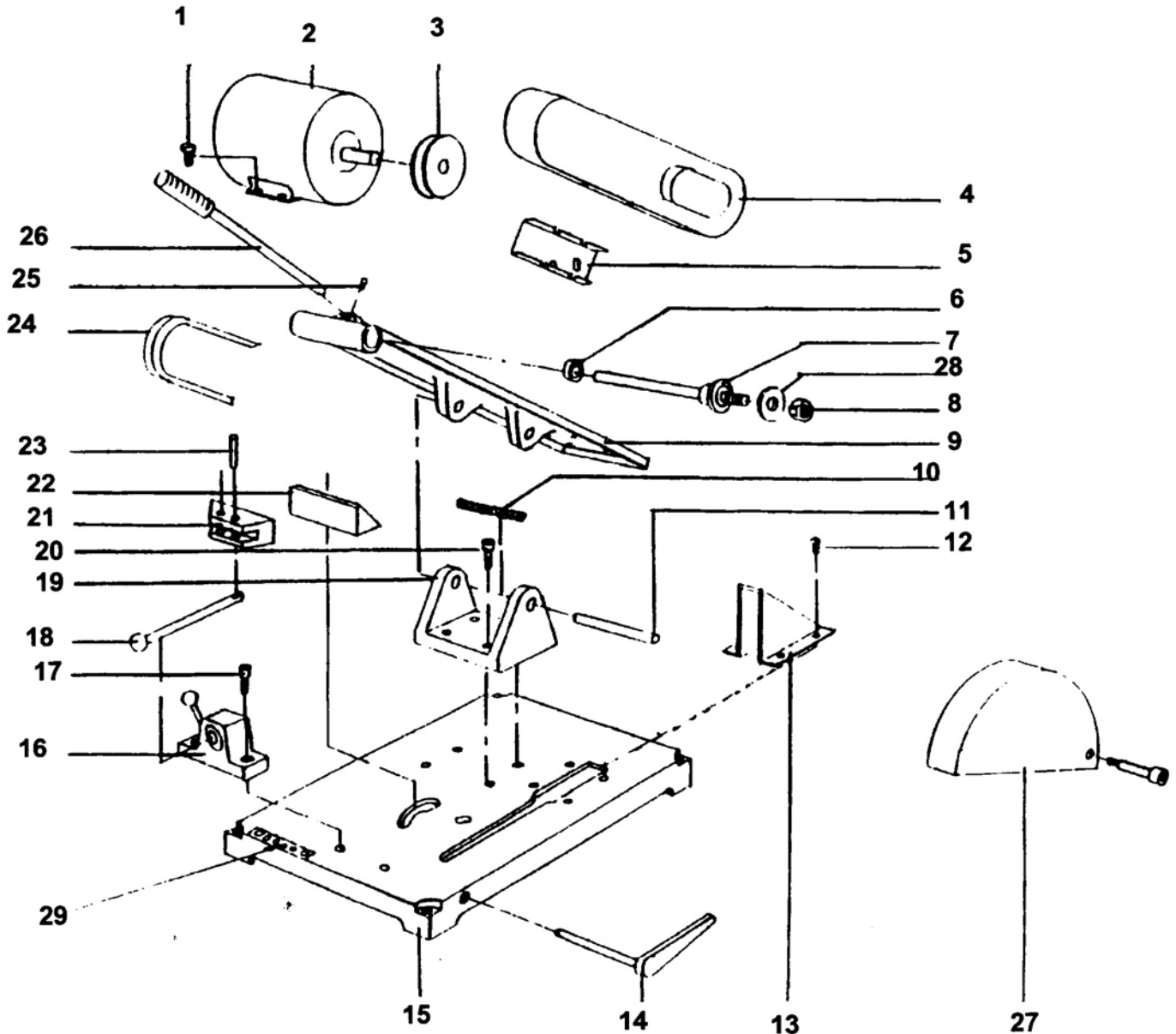


KALAMAZOO INDUSTRIES, INC.

6856 East K Avenue
Kalamazoo, MI 49048
269-382-2050 PH
269-382-0790 FAX
www.kalamazooindustries.com



Model K10B, S, SSF



PART NO.	DESCRIPTION	QTY	PART NO.	DESCRIPTION	QTY		
1	5/16x1-1/4 MOTOR BOLT	4	16	386-001	WISE HOUSING ASSY	1	
2	3HP MOTOR 1PH OR 3PH	1	17		5/16-18 S.H.C.S.	2	
3	560-045	MOTOR PULLEY & SPINDLE	2	18	645-001	WISE ROD	1
4	342-043	BELT GUARD	1	19	041-006	TRUNNION	1
5	342-027	BRACKET, BELT GUARD	1	20		5/16-18x1-3/8 S.H.C.S.	4
6	044-007	K10 BEARING	2	21	431-001	FRONT VISE JAW	1
7	701-003	SPINDLE W/TIGHT FLANGE	1	22	431-002	REAR VISE JAW	1
8		SPINDLE NUT	1	23	562-001	WISE JAW PIN	1
9	002-003	SAW ARM	1	24	051-003	V-BELT 3V355	1
10	697-004	TRUNNION SPRING	1	25		1/4-20 S.S.S.	1
11	562-004	TRUNNION PIN	1	26	381-003	HANDLE W/GRIP	1
12		10-24x1/2 R.H.M.S.	4	27	342-006	WHEEL GUARD	1
13	342-008	SPARK DEFLECTOR	1	28	292-008	LOOSE FLANGE	1
14	709-002	STOCK STOP	1	29		SERIAL NUMBER LOCATION	1
15	050-008	SAW BASE	1		912-015	WISE ASSY/LESS JAW	1